



MONTHLY MEMBERSHIP PROGRESS REPORT

District 323 G1

Results as of: 9/30/2015

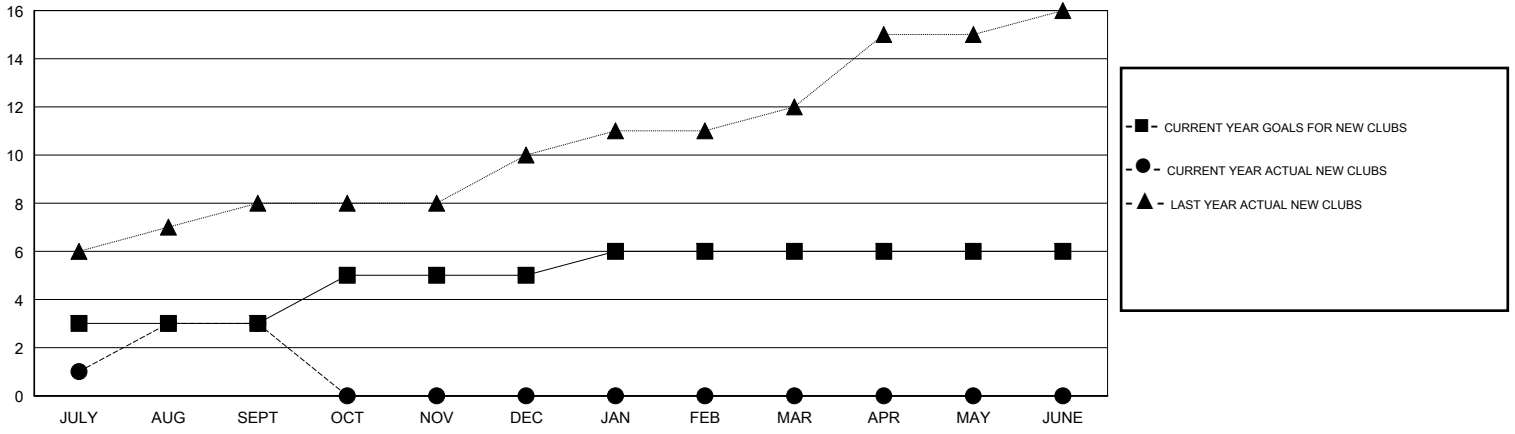
GMT: KAMLESH JAIN

LOCATION INDIA

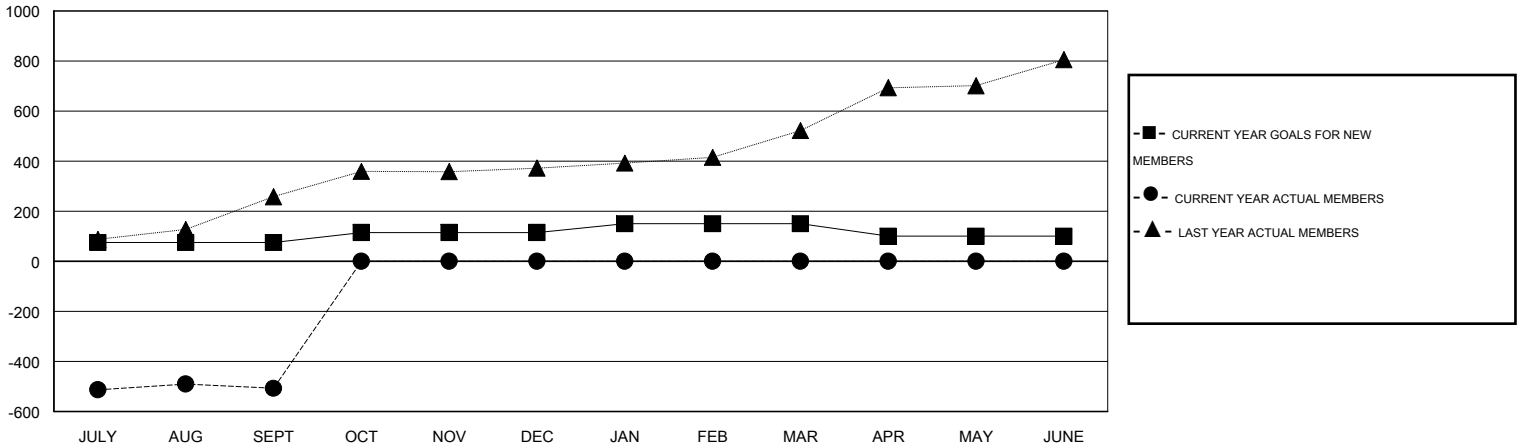
GMT CA 6

Clubs					Members				
RESULTS FOR 2015-2016					RESULTS FOR 2015-2016				
QUARTER	NEW CLUB GOAL	NEW CLUBS	DROPPED CLUBS	NET GAIN/LOSS	QUARTER	NEW MEMBER GOAL	CHARTER AND NEW MEMBERS ADDED	DROPPED MEMBERS	NET GAIN/LOSS
JULY/AUG/SEPT	3	3	0	3	JULY/AUG/SEPT	75	102	609	-507
OCT/NOV/DEC	2	0	0	0	OCT/NOV/DEC	40	0	0	0
JAN/FEB/MAR	1	0	0	0	JAN/FEB/MAR	35	0	0	0
APR/MAY/JUNE	0	0	0	0	APR/MAY/JUNE	-50	0	0	0

GOALS AND ACTUAL NEW CLUBS CUMULATIVE



GOALS AND ACTUAL MEMBERS CUMULATIVE



DROPPED CLUBS: 0	22 CLUBS OF 129 ADDED 1 OR MORE NEW MEMBERS	<u>GENDER DISTRIBUTION</u>	
<u>DROPPED MEMBERS</u>		MALE	2,849 (73.77%)
DECEASED	1	FEMALE	1,013 (26.23%)
CLUB CANCELLED	0	<u>FAMILY UNIT MEMBERS</u> 1,284	
OTHER	608	<u>HEAD OF HOUSEHOLD</u> 565	
TOTAL	609	<u>NON-HEAD OF HOUSEHOLD</u> 719	

[CLICK HERE FOR HEALTH ASSESSMENT DATA](#)